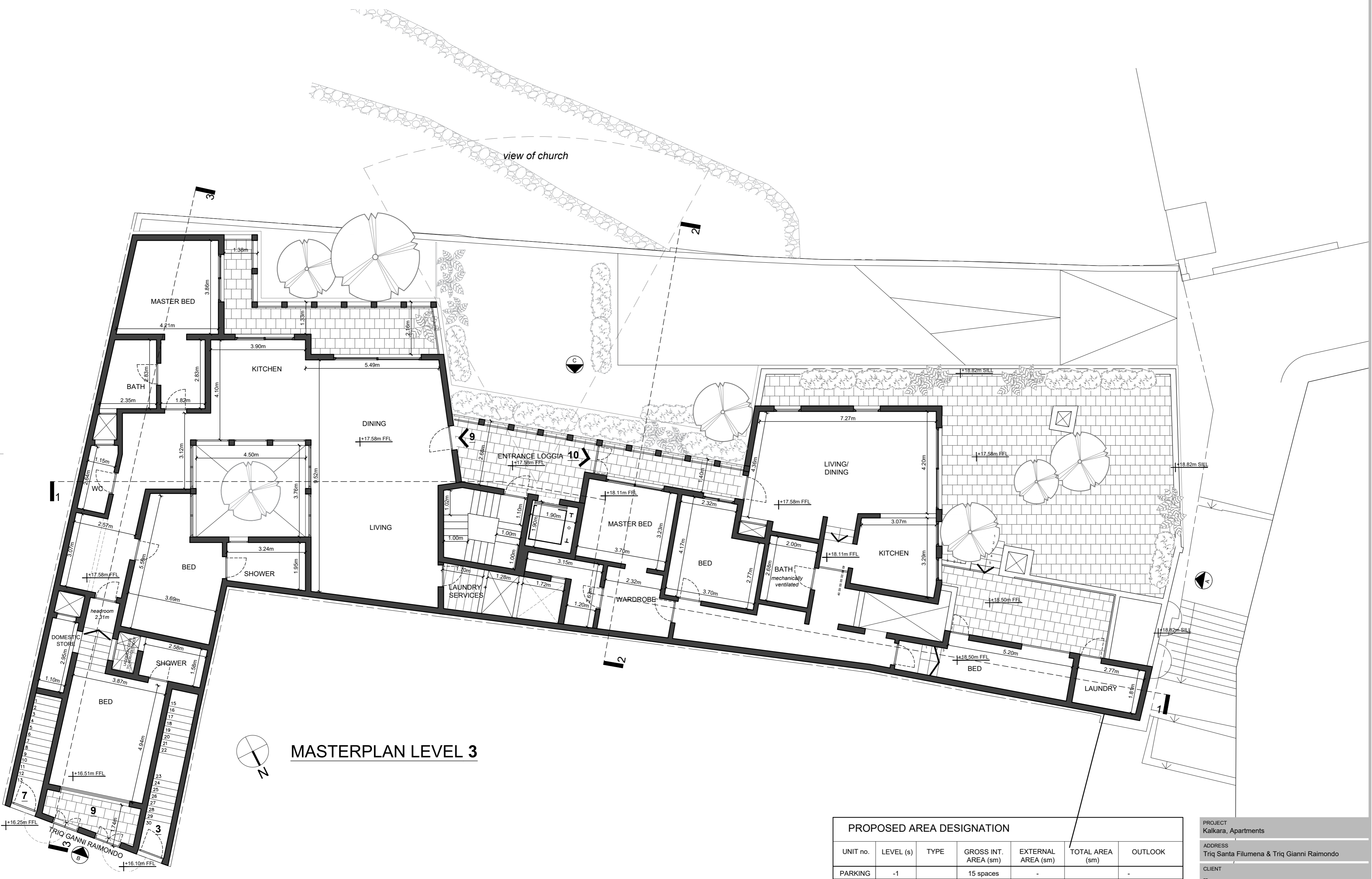


MASTERPLAN LEVEL 2



MASTERPLAN LEVEL 3

PROPOSED AREA DESIGNATION						
UNIT no.	LEVEL (s)	TYPE	GROSS INT. AREA (sqm)	EXTERNAL AREA (sqm)	TOTAL AREA (sqm)	OUTLOOK
PARKING	-1		15 spaces	-	-	-
APT 1	0	3 BED	116.5	-	116.5	Santa Filumena
APT 2	0	3 BED	132.6	21.27	153.9	Santa Filumena
APT 3	0, 1	4 BED	338.6	74.85	413.45	Gianni Raimondo
APT 4	1	3 BED	124.0	6.00	128.0	Santa Filumena
APT 5	1	3 BED	128.2	14.6	142.8	Santa Filumena
APT 6	2	3 BED	124.0	6.00	128.0	Santa Filumena
APT 7	2	3 BED	188.5	26.2	214.7	Gianni Raimondo
APT 8	2	3 BED	128.2	14.6	142.8	Santa Filumena
APT 9	3	3/4 BED	202.1	30.0	232.1	Gianni Raimondo
APT 10	3	3 BED	148.5	116.2	264.7	Santa Filumena
APT 11	4	3 BED	136.6	75.1	211.7	Gianni Raimondo
APT 12	4, 5	3 BED	166.1	154.9	321.0	Gianni Raimondo

PROJECT	Kalkara, Apartments
ADDRESS	Triq Santa Filumena & Triq Gianni Raimondo
CLIENT	
PROJECT REF.	V15
DWG. DESCRIPTION	Masterplan level 2, 3
DWG. NO.	V15_P_201
SCALE	1:100
PAPER	A1
DRAWN	DV
CHECKED	PV
REVISIONS	00/19/06/2020, Submitted to PA

**P MASTERPLAN**  
 Site at Triq Santa Filumena & Triq Ganni Raimondo

