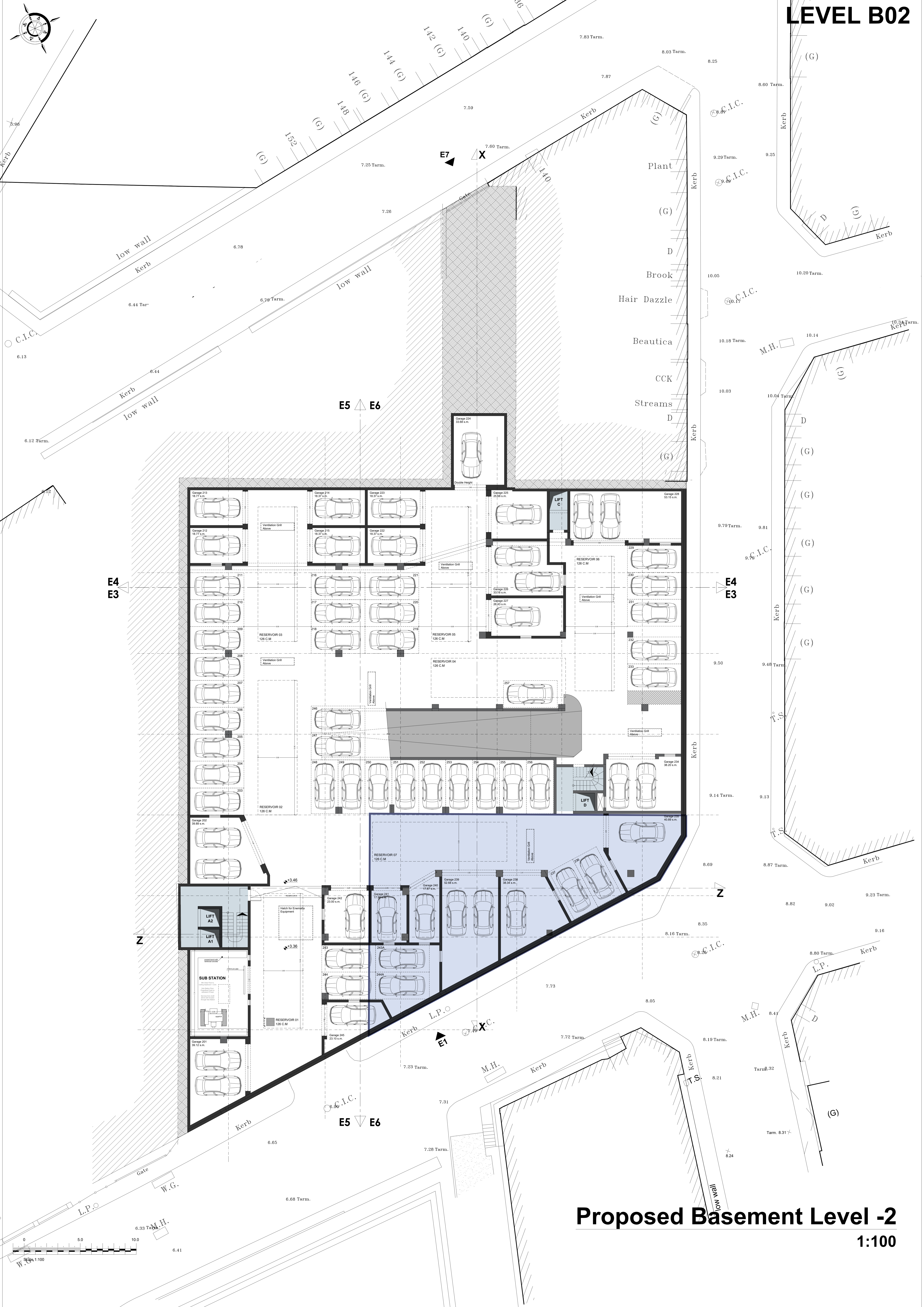


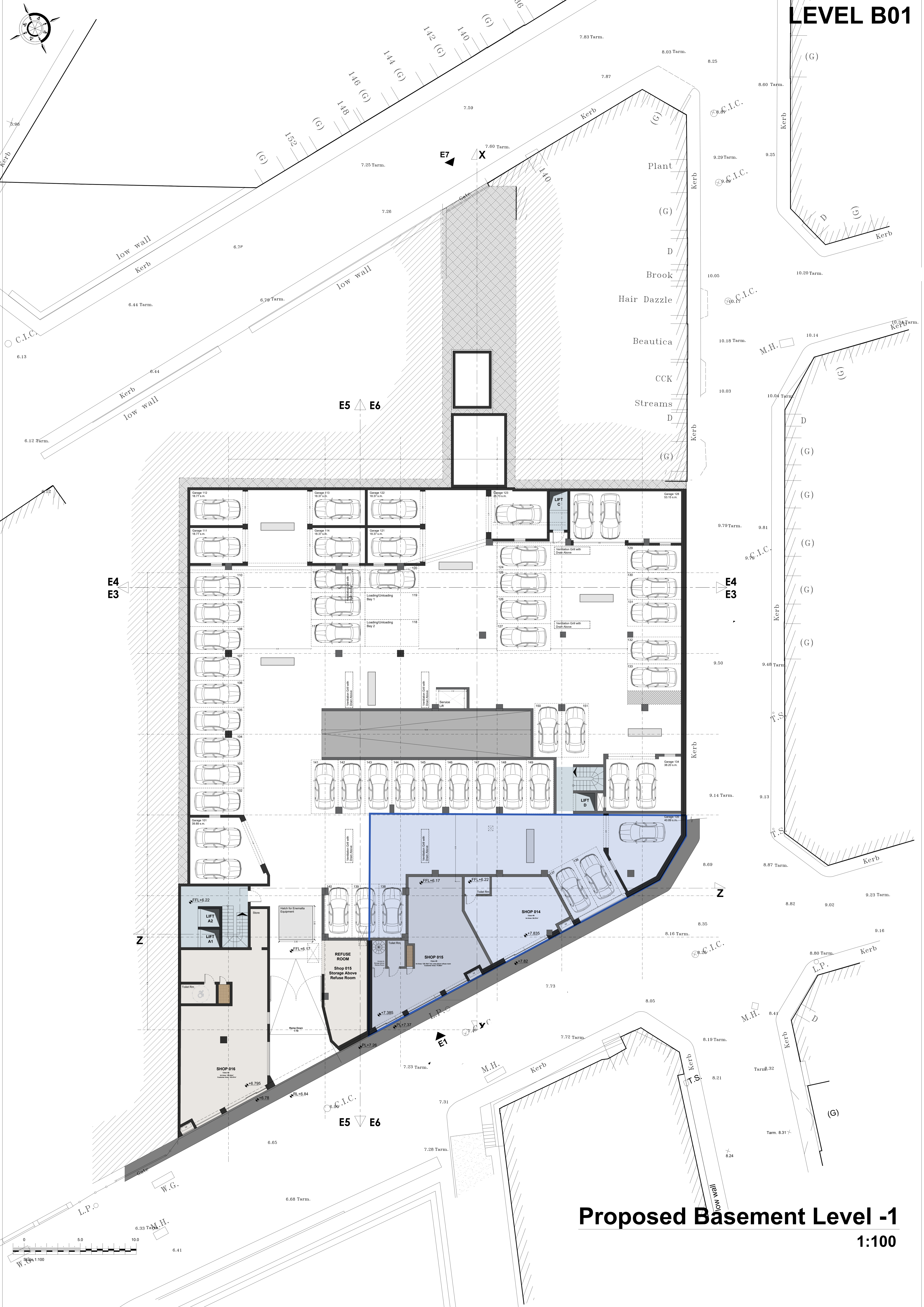
LEVEL B02



Proposed Basement Level -2

1:100

LEVEL B01



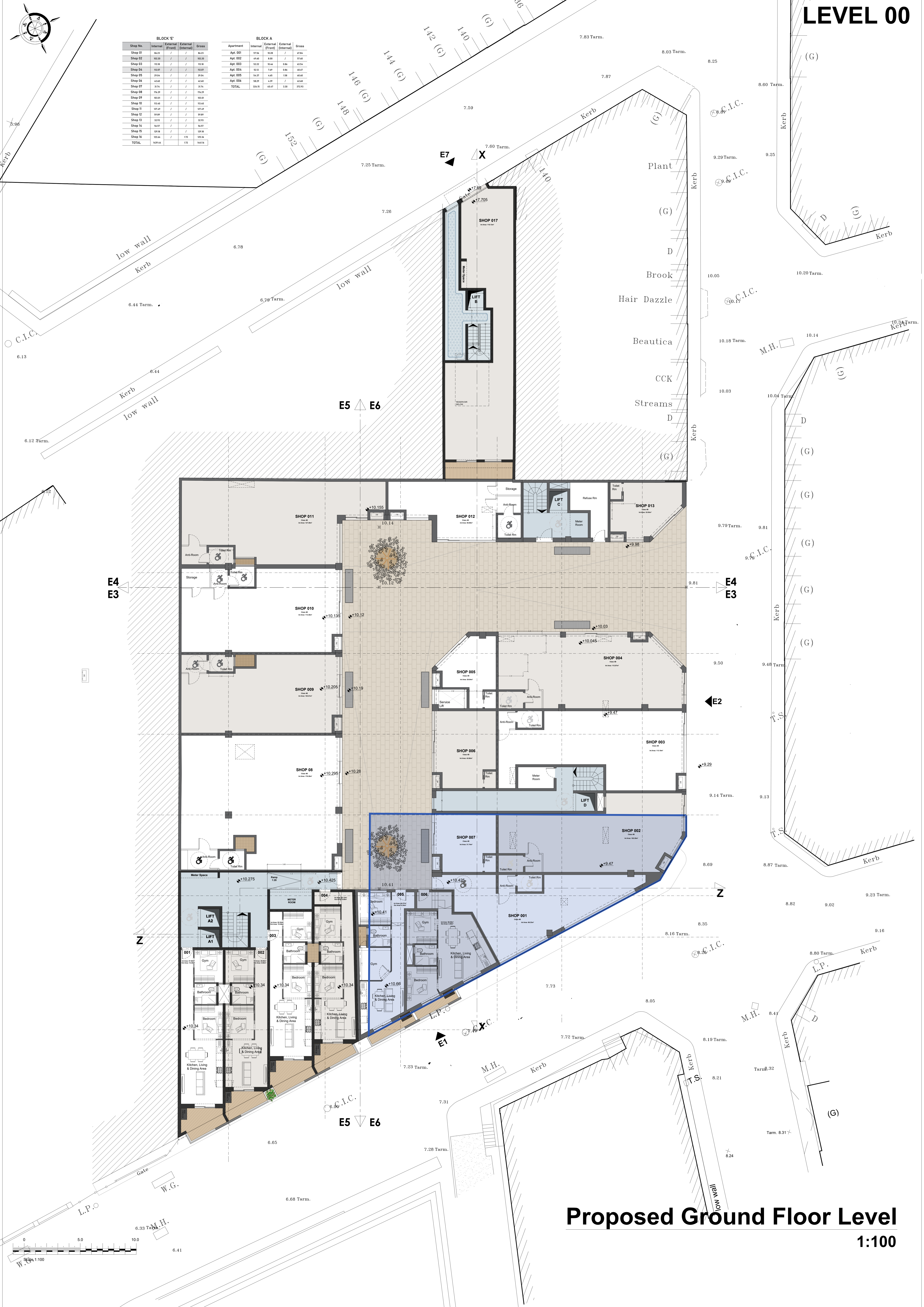
Proposed Basement Level -1

1:100

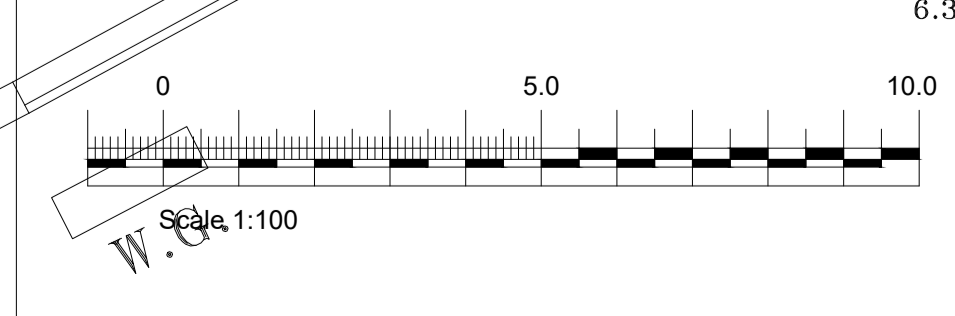
LEVEL 00

BLOCK 'E'				
Shop No.	Internal	External (Front)	External (Rear)	Gross
Shop 01	14.21	/	/	14.21
Shop 02	10.20	/	/	10.20
Shop 03	10.18	/	/	10.18
Shop 04	10.27	/	/	10.27
Shop 05	21.64	/	/	21.64
Shop 06	10.00	/	/	10.00
Shop 07	17.74	/	/	17.74
Shop 08	17.25	/	/	17.25
Shop 09	10.31	/	/	10.31
Shop 10	11.03	/	/	11.03
Shop 11	10.64	/	/	10.64
Shop 12	10.91	/	/	10.91
Shop 13	10.15	/	/	10.15
Shop 14	10.01	/	/	10.01
Shop 15	10.04	/	/	10.04
Shop 16	10.44	/	/	10.44
TOTAL	142.94	/	/	142.94

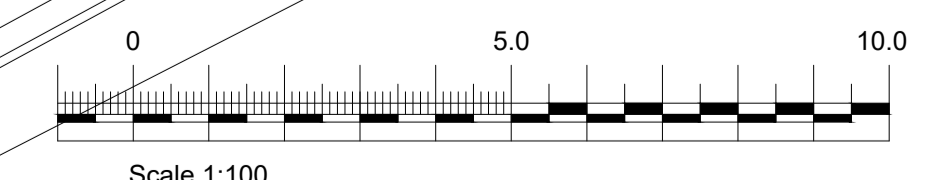
BLOCK 'A'				
Apartment	Internal	External (Front)	External (Rear)	Gross
Apt. 001	97.56	10.28	/	107.84
Apt. 002	49.60	8.00	/	57.60
Apt. 003	52.02	10.44	9.84	72.30
Apt. 004	52.02	1.68	8.84	62.54
Apt. 005	54.37	4.65	1.58	60.60
Apt. 006	54.00	4.28	/	58.28
TOTAL	310.15	43.67	1.92	355.74



Proposed Ground Floor Level
1:100

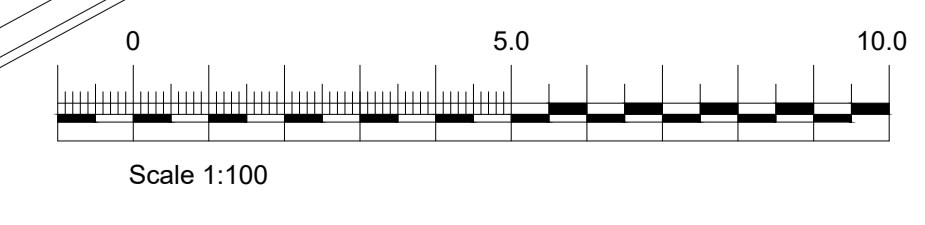
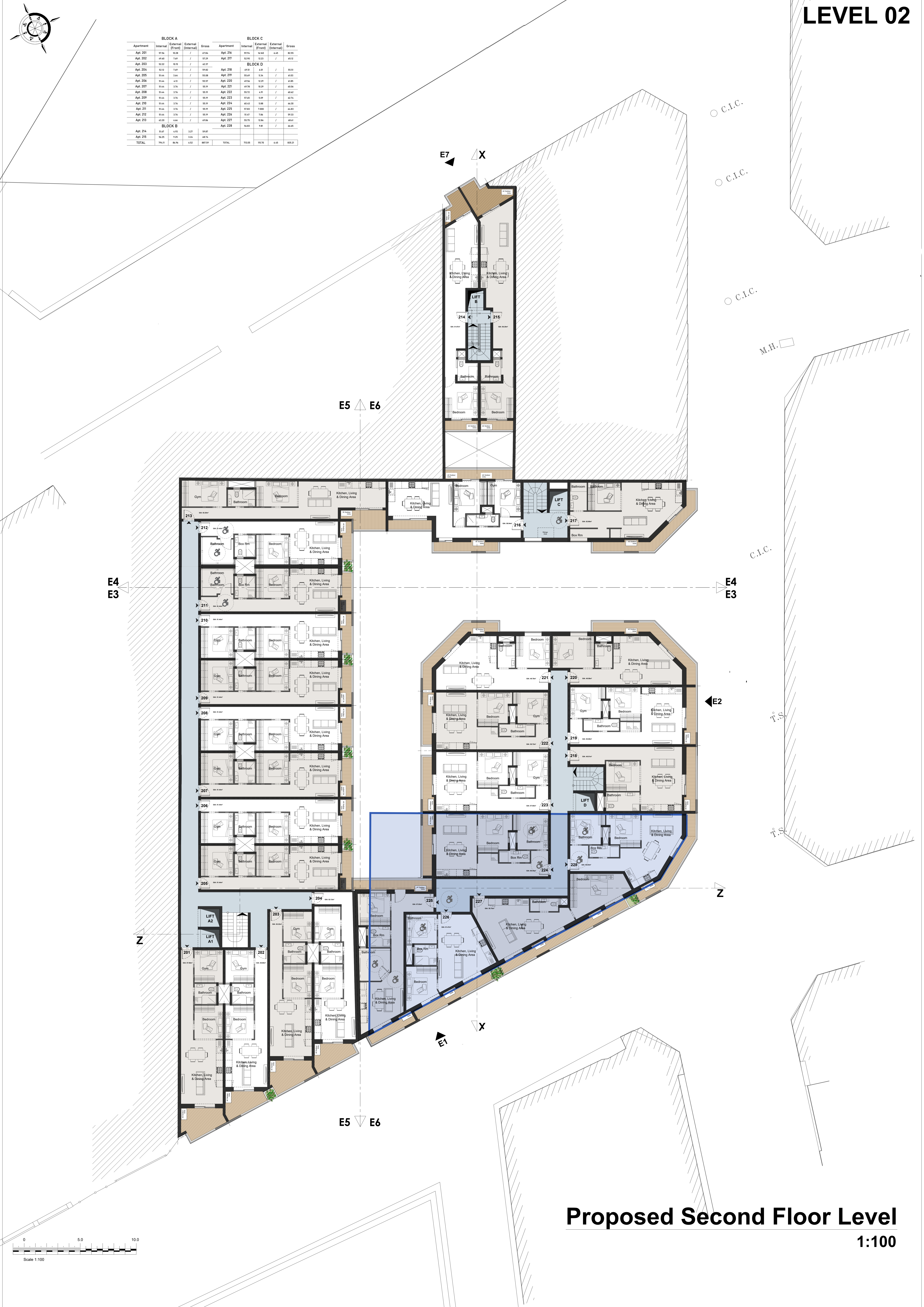
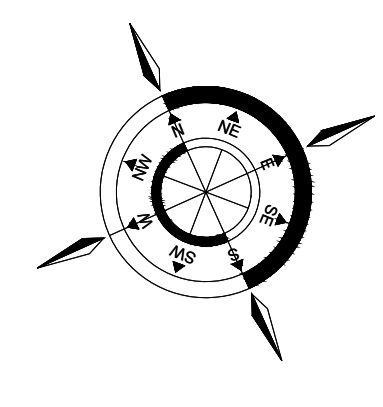


BLOCK A				BLOCK C					
Apartment	Internal	External (Front)	External (Internal)	Gross	Apartment	Internal	External (Front)	External (Internal)	Gross
Apt. 101	51.56	10.28	/	61.84	Apt. 116	55.14	10.88	/	66.02
Apt. 102	43.88	7.87	/	51.75	Apt. 117	52.18	12.21	/	64.39
Apt. 103	52.22	10.16	/	62.37	BLOCK D				
Apt. 104	52.23	7.89	/	60.12					
Apt. 105	51.44	3.44	/	54.88					
Apt. 106	51.44	4.73	/	56.17					
Apt. 107	51.44	3.76	/	55.20					
Apt. 108	51.44	3.76	/	55.20					
Apt. 109	51.44	3.76	/	55.20					
Apt. 110	51.44	3.76	/	55.20					
Apt. 111	51.44	3.76	/	55.20					
Apt. 112	51.44	3.76	/	55.20					
Apt. 113	43.23	6.86	1.32	51.41	Apt. 127	55.75	12.86	/	68.61
BLOCK B				BLOCK E					
Apt. 114	51.44	4.93	2.21	58.58	Apt. 128	54.83	9.88	0.73	65.44
Apt. 115	54.75	8.25	2.24	65.24					
TOTAL	794.24	86.94	18.04	899.22	TOTAL	713.86	116.36	3.41	833.63



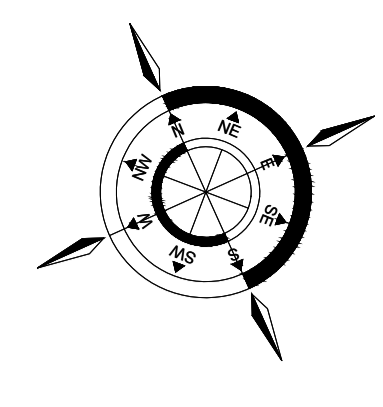
Proposed First Floor Level
1:100

BLOCK A				BLOCK C					
Apartment	Internal	External (Front)	External (Internal)	Gross	Apartment	Internal	External (Front)	External (Internal)	Gross
Apt. 201	97.56	16.29	/	113.85	Apt. 216	99.94	16.90	x.45	116.29
Apt. 202	49.00	7.49	/	56.49	Apt. 217	12.00	12.22	/	24.22
Apt. 203	52.20	16.95	/	69.15	BLOCK D				
Apt. 204	52.12	7.49	/	59.61	Apt. 218	48.55	x.45	/	59.00
Apt. 205	51.44	3.44	/	54.88	Apt. 219	55.97	5.34	/	61.31
Apt. 206	51.44	4.10	/	55.54	Apt. 220	42.44	12.24	/	54.68
Apt. 207	51.44	3.76	/	55.20	Apt. 221	47.76	10.25	/	58.01
Apt. 208	51.44	3.76	/	55.20	Apt. 222	55.72	x.45	/	60.17
Apt. 209	51.44	3.76	/	55.20	Apt. 223	57.45	5.09	/	62.54
Apt. 210	51.44	3.76	/	55.20	Apt. 224	40.43	5.86	/	46.29
Apt. 211	51.44	3.76	/	55.20	Apt. 225	51.80	3.80	/	55.60
Apt. 212	51.44	3.76	/	55.20	Apt. 226	51.47	7.64	/	59.11
Apt. 213	43.20	4.44	/	47.64	Apt. 227	55.75	12.68	/	68.43
BLOCK B				Apt. 228	56.83	x.45	/	61.28	
Apt. 214	50.47	4.95	3.27	58.69					
Apt. 215	54.05	4.55	3.25	61.85					
TOTAL	174.11	64.74	4.52	243.37	TOTAL	712.05	105.70	4.45	822.20

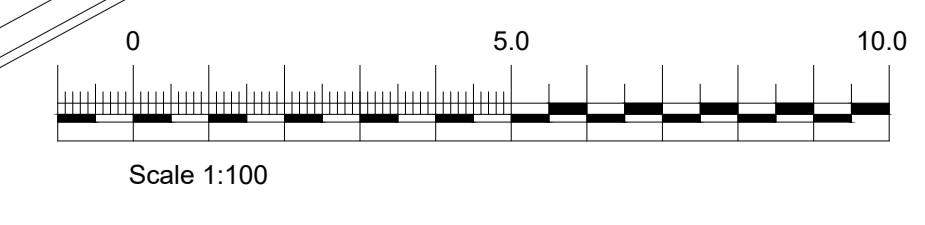


Proposed Second Floor Level
1:100

BLOCK A				BLOCK C					
Apartment	Internal	External (Front)	External (Internal)	Gross	Apartment	Internal	External (Front)	External (Internal)	Gross
Apt. 301	1572	3947	/	5519	Apt. 315	1574	3939	445	5518
Apt. 302	1633	3223	/	4856	Apt. 316	1523	3223	/	4746
Apt. 303	1470	2333	/	3803	BLOCK D				
Apt. 304	1144	244	/	1388					
Apt. 305	1144	431	/	1575					
Apt. 306	1144	376	/	1520					
Apt. 307	1144	376	/	1520					
Apt. 308	1144	376	/	1520					
Apt. 309	1144	376	/	1520					
Apt. 310	1144	376	/	1520					
Apt. 311	1144	376	/	1520					
Apt. 312	4320	444	/	4764					
BLOCK B									
Apt. 313	503	436	127	1066	Apt. 327	1683	441	/	2124
Apt. 314	1640	425	123	2188	Apt. 328	1683	441	/	2124
TOTAL	14254	10233	432	24914	TOTAL	11235	1715	445	13400

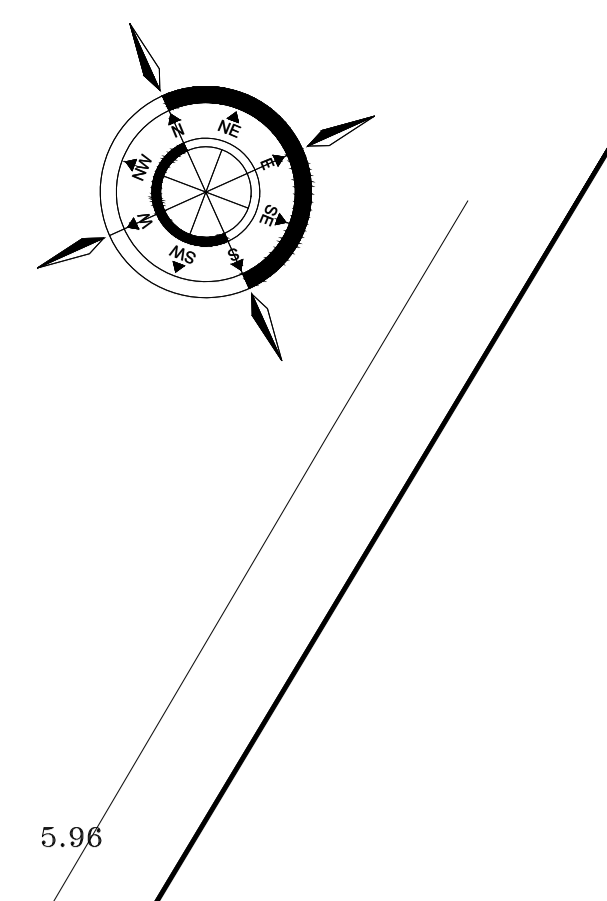


C.I.C.

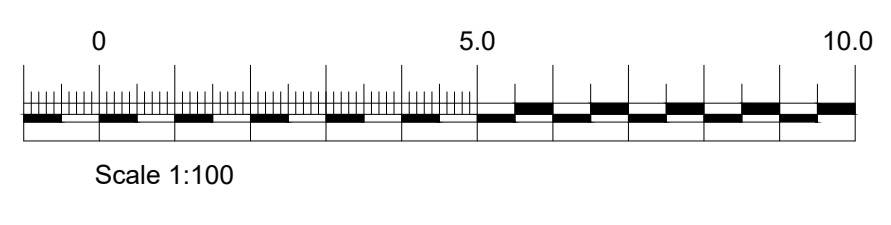


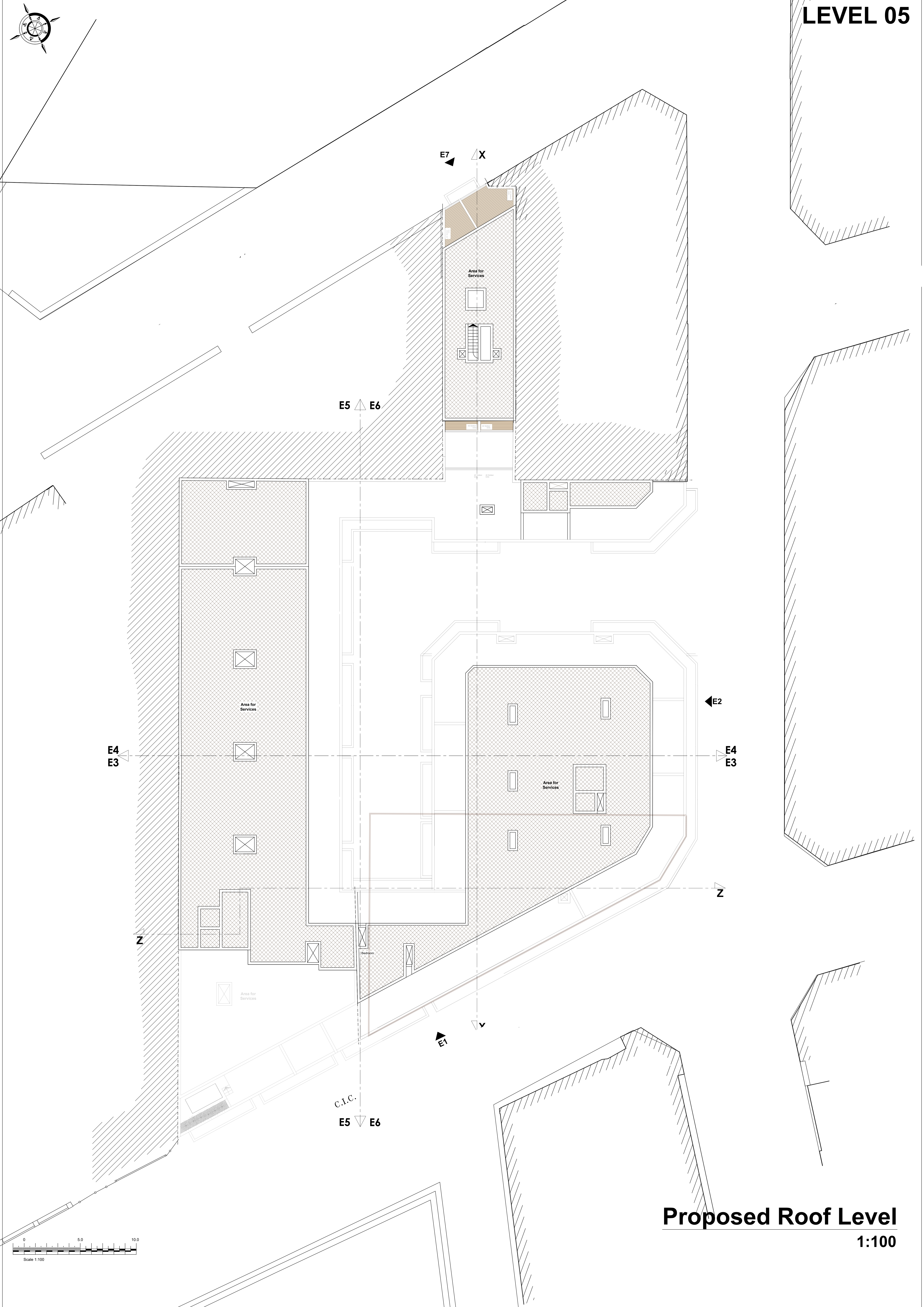
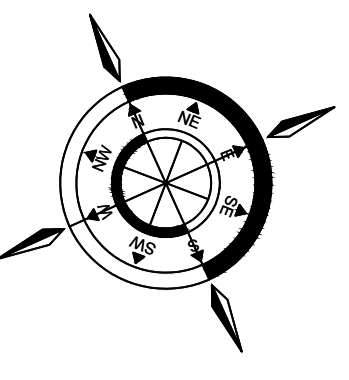
Proposed Third Floor Level
1:100

BLOCK A				BLOCK C					
Apartment	Internal	External (Front)	External (Internal)	Gross	Apartment	Internal	External (Front)	External (Internal)	Gross
Apt. 401	1915	1915	0	26.40					
Apt. 402	1915	1915	0	26.40					
Apt. 403	1915	1915	0	26.40					
Apt. 404	1915	1915	0	26.40					
Apt. 405	1915	1915	0	26.40					
Apt. 406	1915	1915	0	26.40					
BLOCK B				BLOCK D					
Apt. 407	1915	1915	0	26.40	Apt. 409	1915	1915	0	26.40
Apt. 408	1915	1915	0	26.40	Apt. 410	1915	1915	0	26.40
Apt. 409	1915	1915	0	26.40	Apt. 411	1915	1915	0	26.40
Apt. 410	1915	1915	0	26.40	Apt. 412	1915	1915	0	26.40
Apt. 411	1915	1915	0	26.40	Apt. 413	1915	1915	0	26.40
Apt. 412	1915	1915	0	26.40	Apt. 414	1915	1915	0	26.40
Apt. 413	1915	1915	0	26.40					
Apt. 414	1915	1915	0	26.40					
TOTAL				TOTAL					
1915				1915					



Proposed Fourth Floor Level
1:100





E4
E3

E5 E6

E7

X

E2

E4
E3

Z

Z

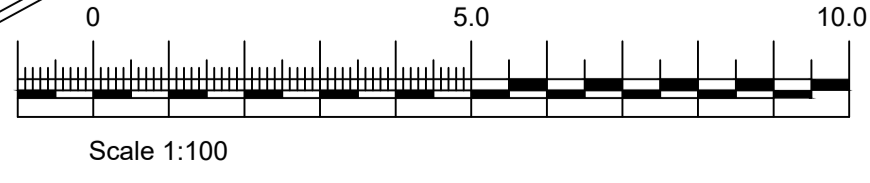
C.I.C.

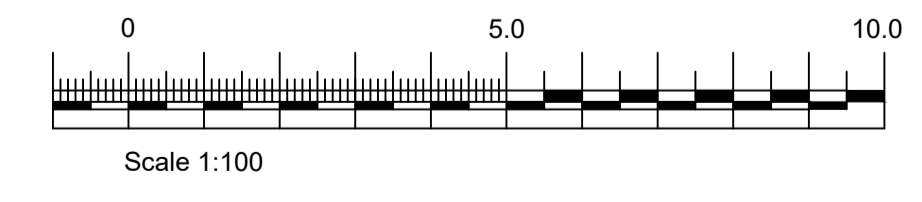
E5 E6

E1

Proposed Roof Level

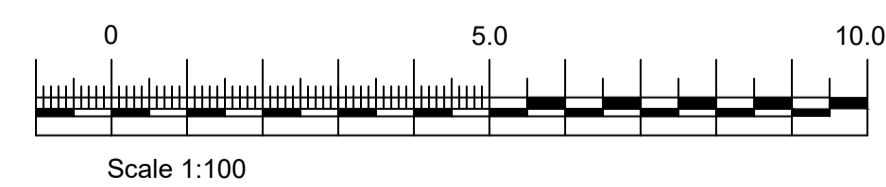
1:100





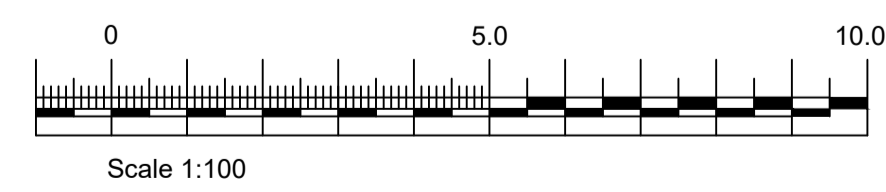
Proposed Elevation E1

1:100



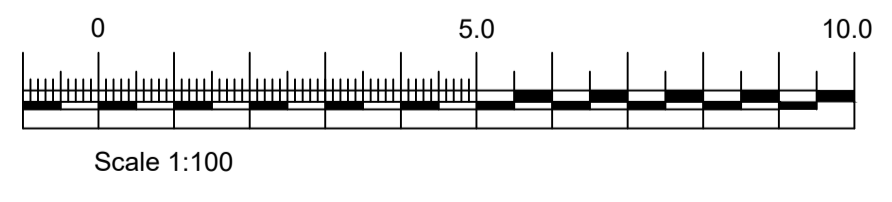
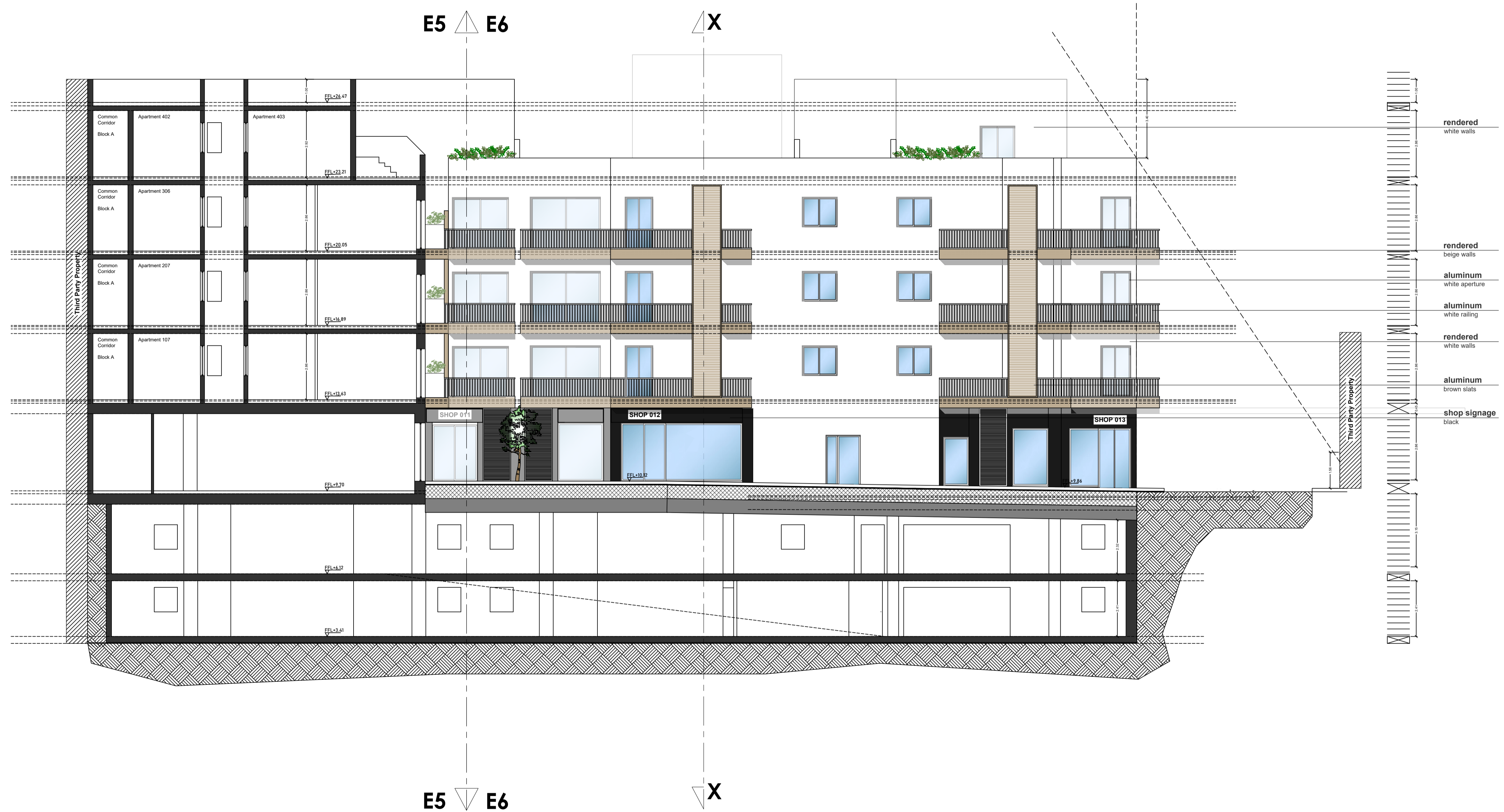
Proposed Elevation E2

1:100



Proposed Elevation E3

1:100



Proposed Elevation E4

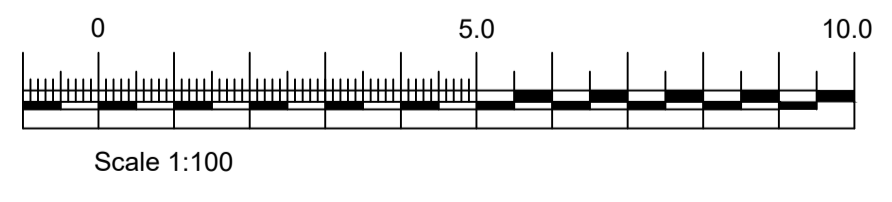
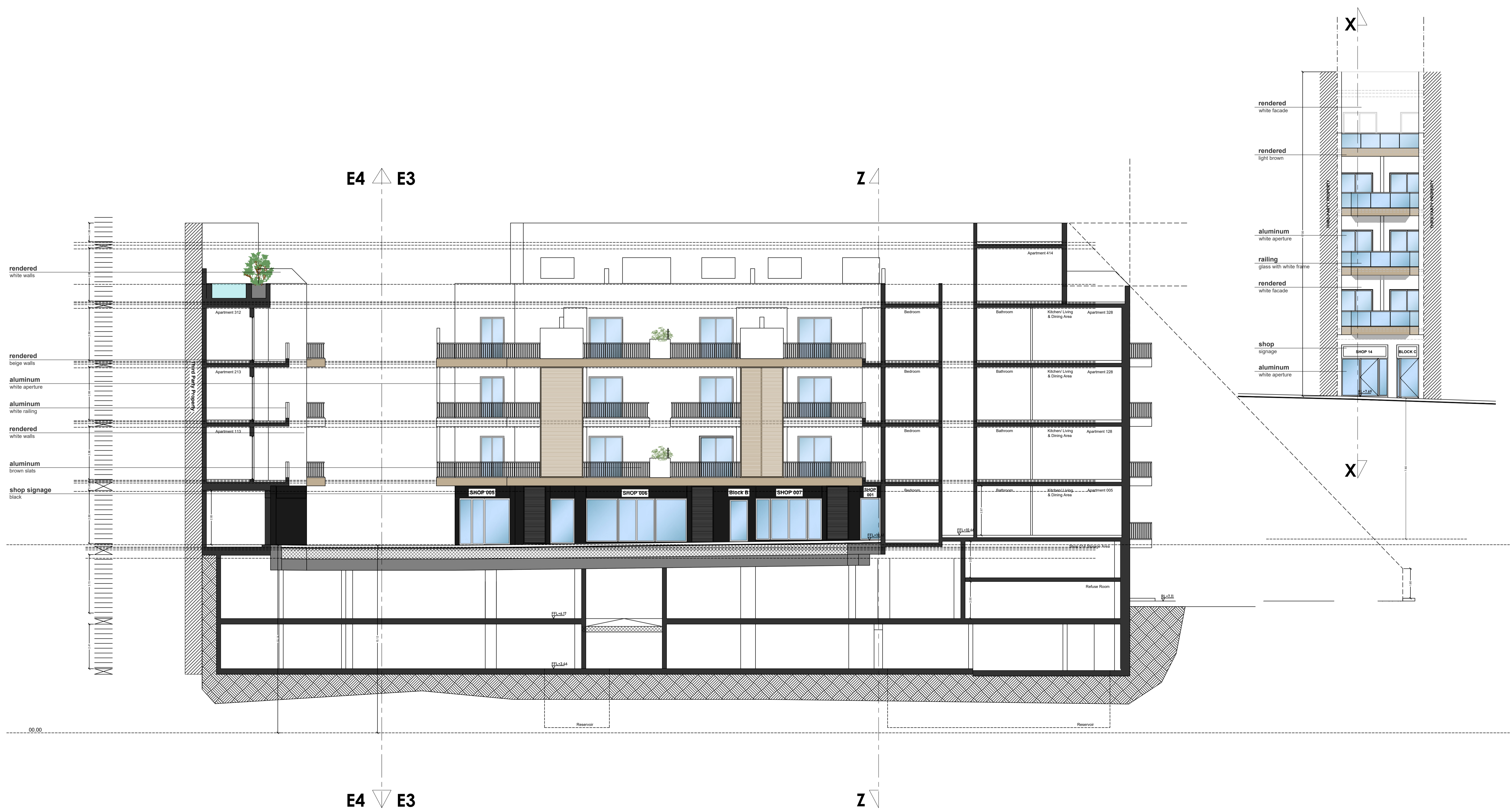
1:100



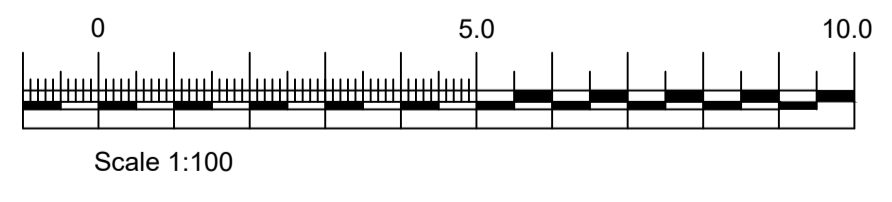
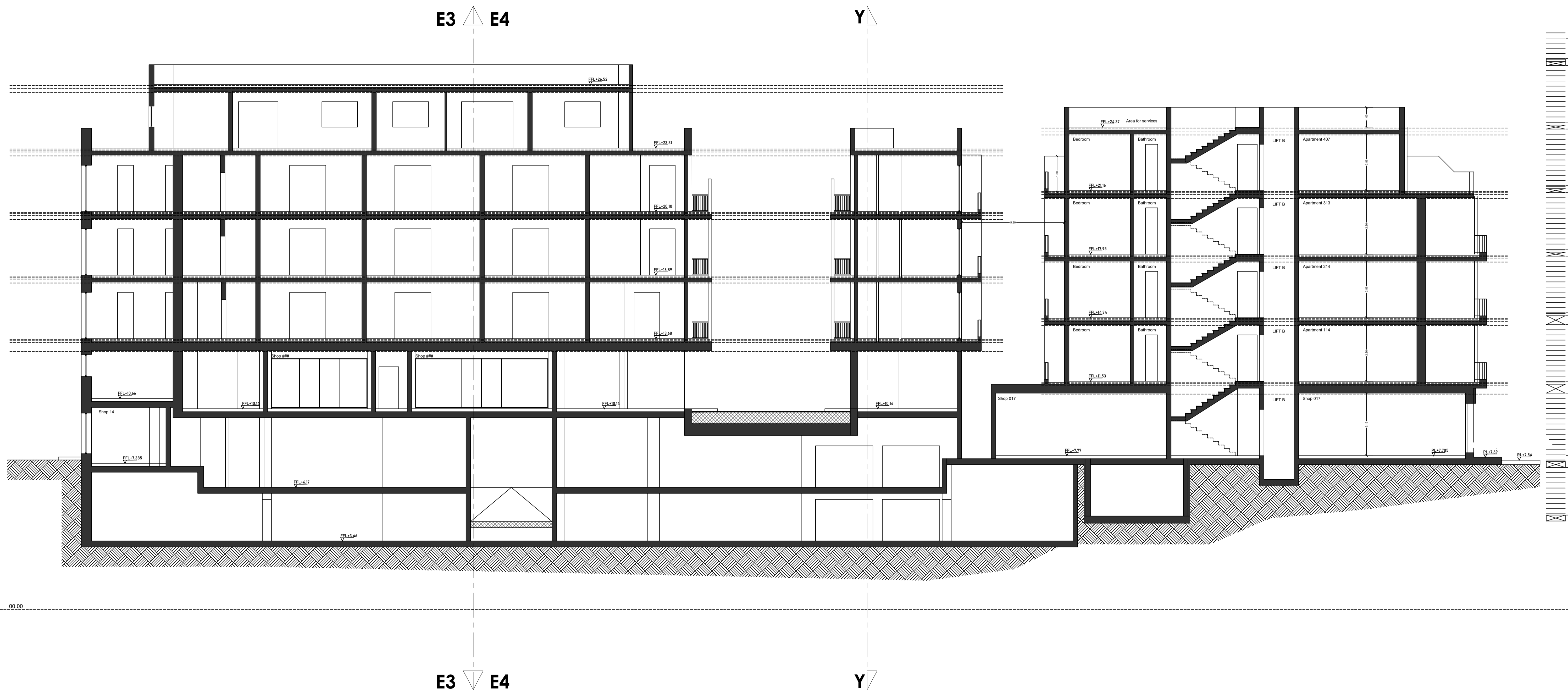
0 5.0 10.0
Scale 1:100

Proposed Elevation E5

1:100



Proposed Elevation E6
1:100



Proposed Section X-X
1:100