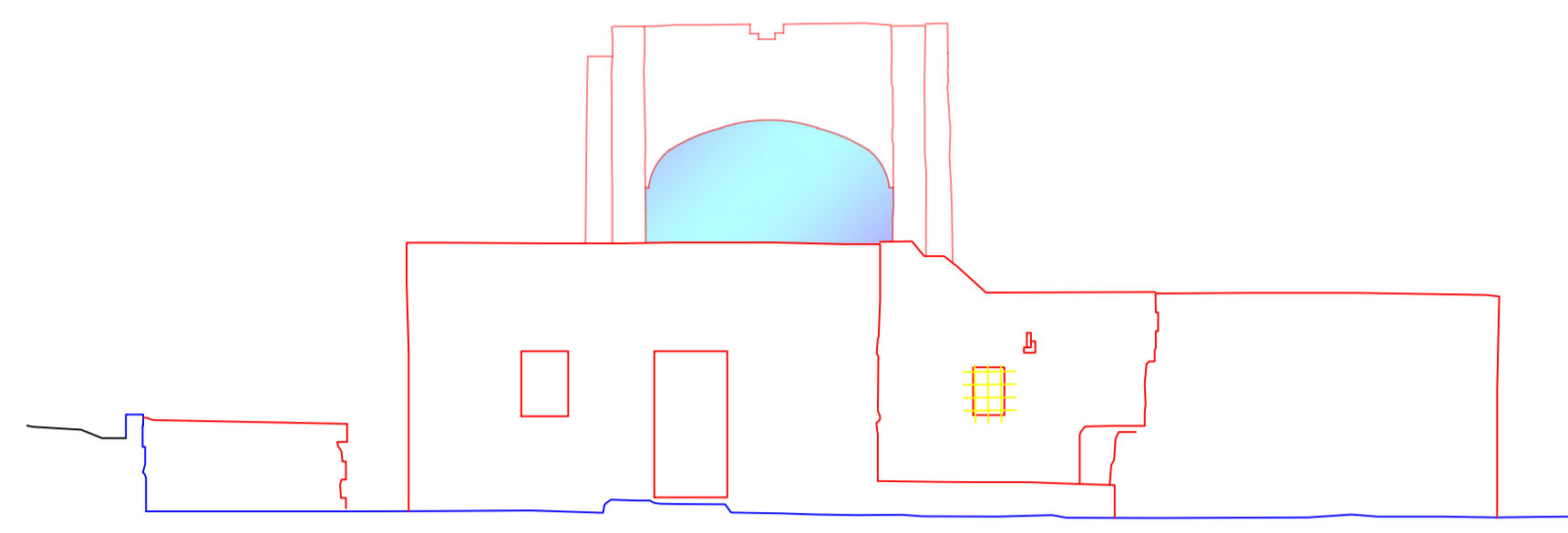
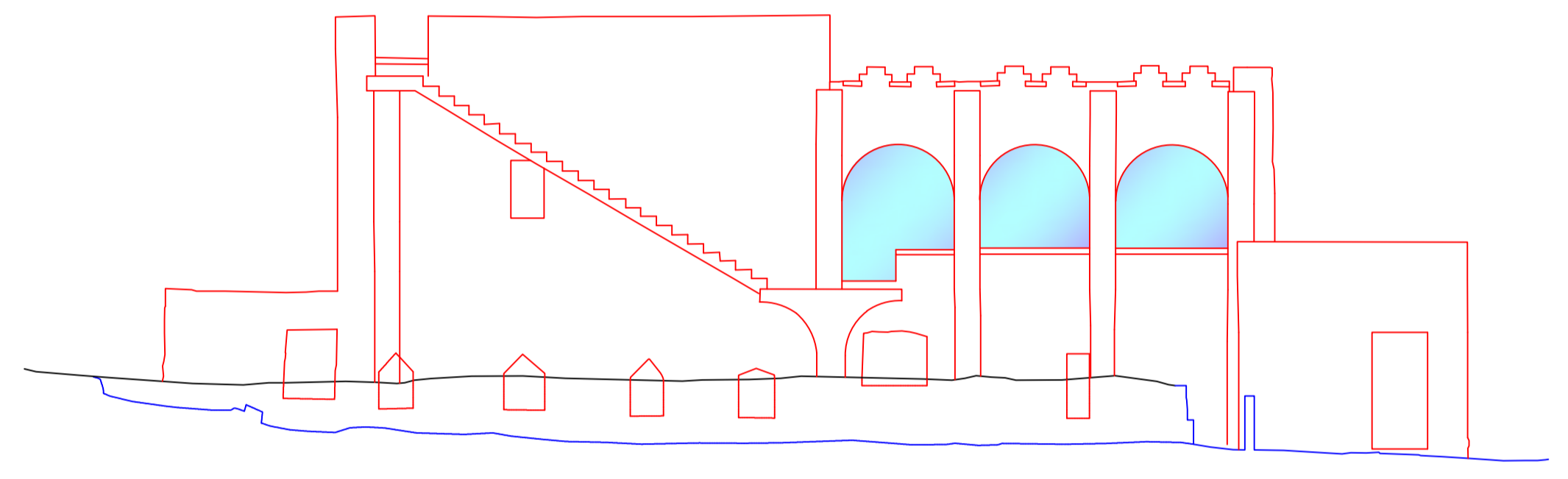


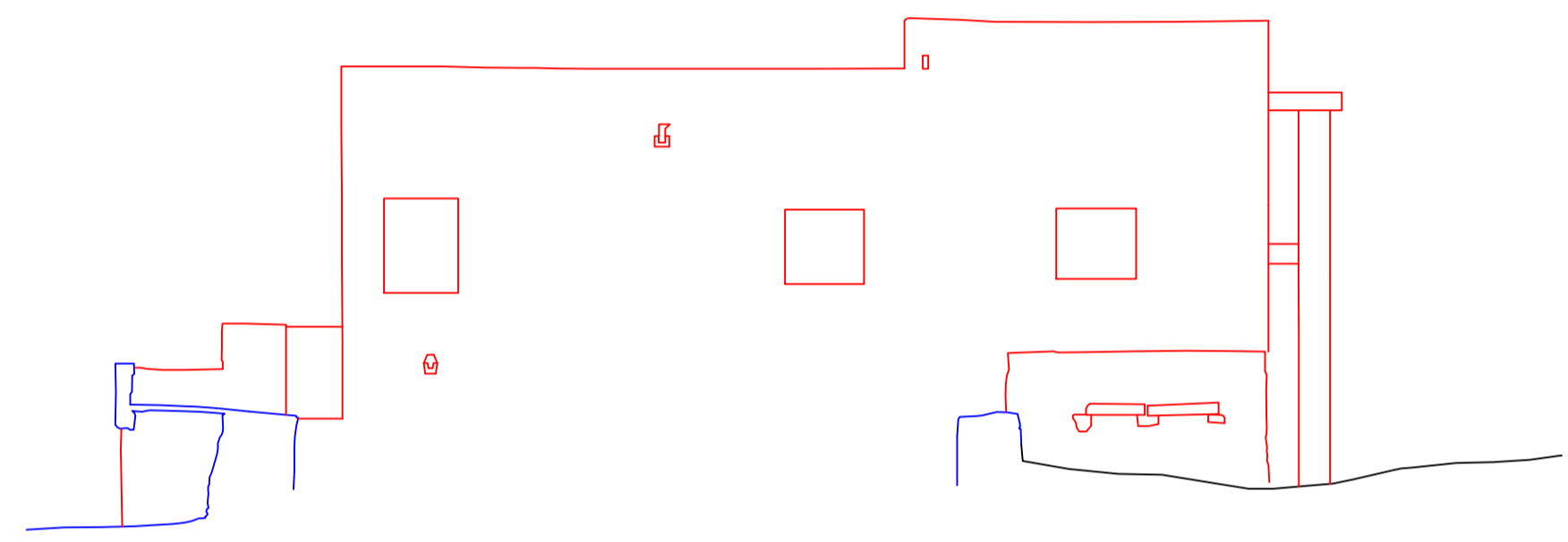
Elevation E1
Level: 105.00



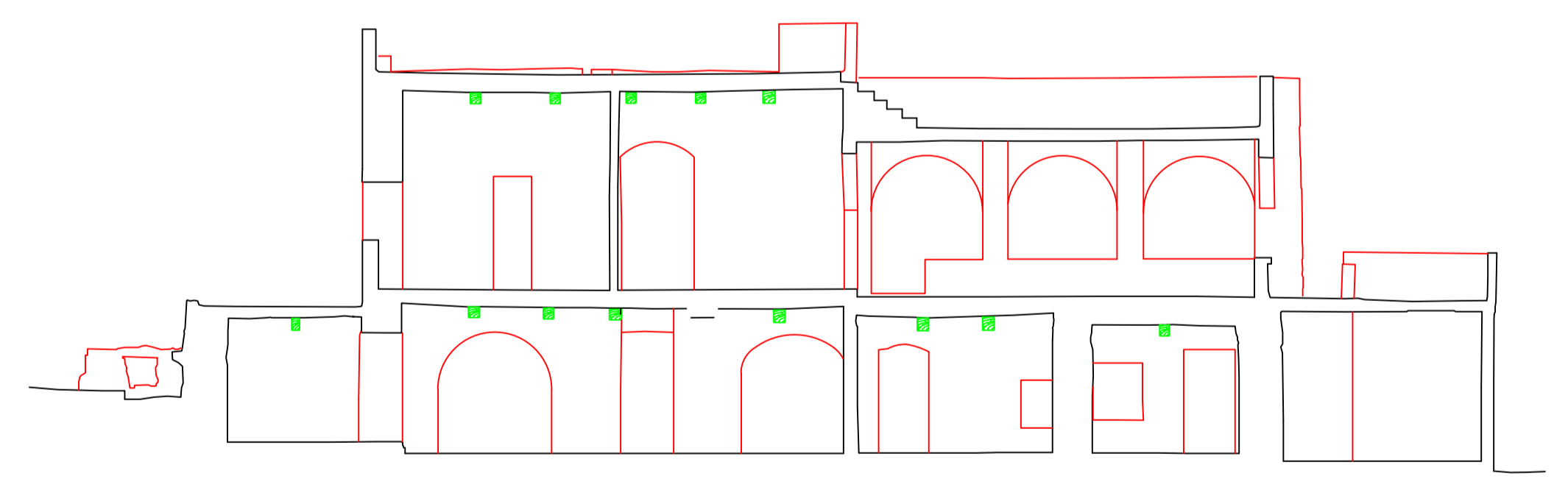
Elevation E2
Level: 105.00



Elevation E3
Level: 105.00



Elevation E4
Level: 105.00



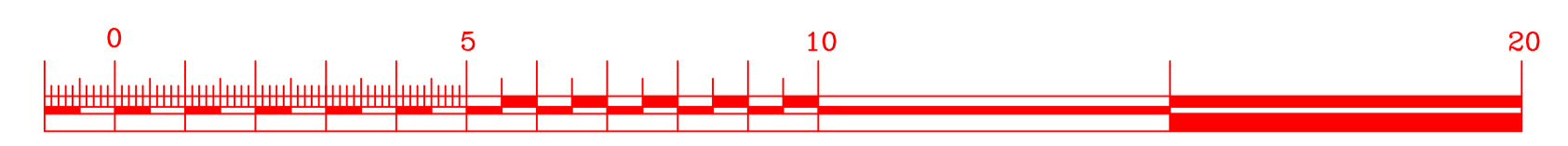
Section A-A
Level: 105.00



Section B-B
Level: 105.00

- Note:
1. Survey carried out on UTM National Grid coordinate system.
 2. Scale Factor 1:1 unless otherwise noted.
 3. Drawing is not to be scaled.
 4. Contractors must check and verify dimensions prior to construction.
 5. Tolerance +/- 6mm.
 6. Hidden lines whose color are Bylayer are lines which are assumed.

Scale 1 : 100



Rev.	Date	By	Description.
ARC. INT. SURVEYORS. Land & Quantity Surveying, 3D High Definition Scanning, Draughting & Project Management.			
LOUIS ATTARD. 16 Old College Str., St. Julians, Malta. Tel. (00358) 21339420. Mob: 9942 5601. web site: www.arcsurveyors.eu Val. Reg. No. 1323-3804.			
Site: Triq il-Bidnija Bidnija			
Cht.: Ms. J. Peregin			
Drg. Title: Existing Sec. & Elev.			
Drg. No. PER230623C		Checked: L.Attard	
Surveyed By: C.Bugeja		Drawn By:	
Drawn by: C.Bugeja		Scale: 1:100	Date: 2nd Aug 23

