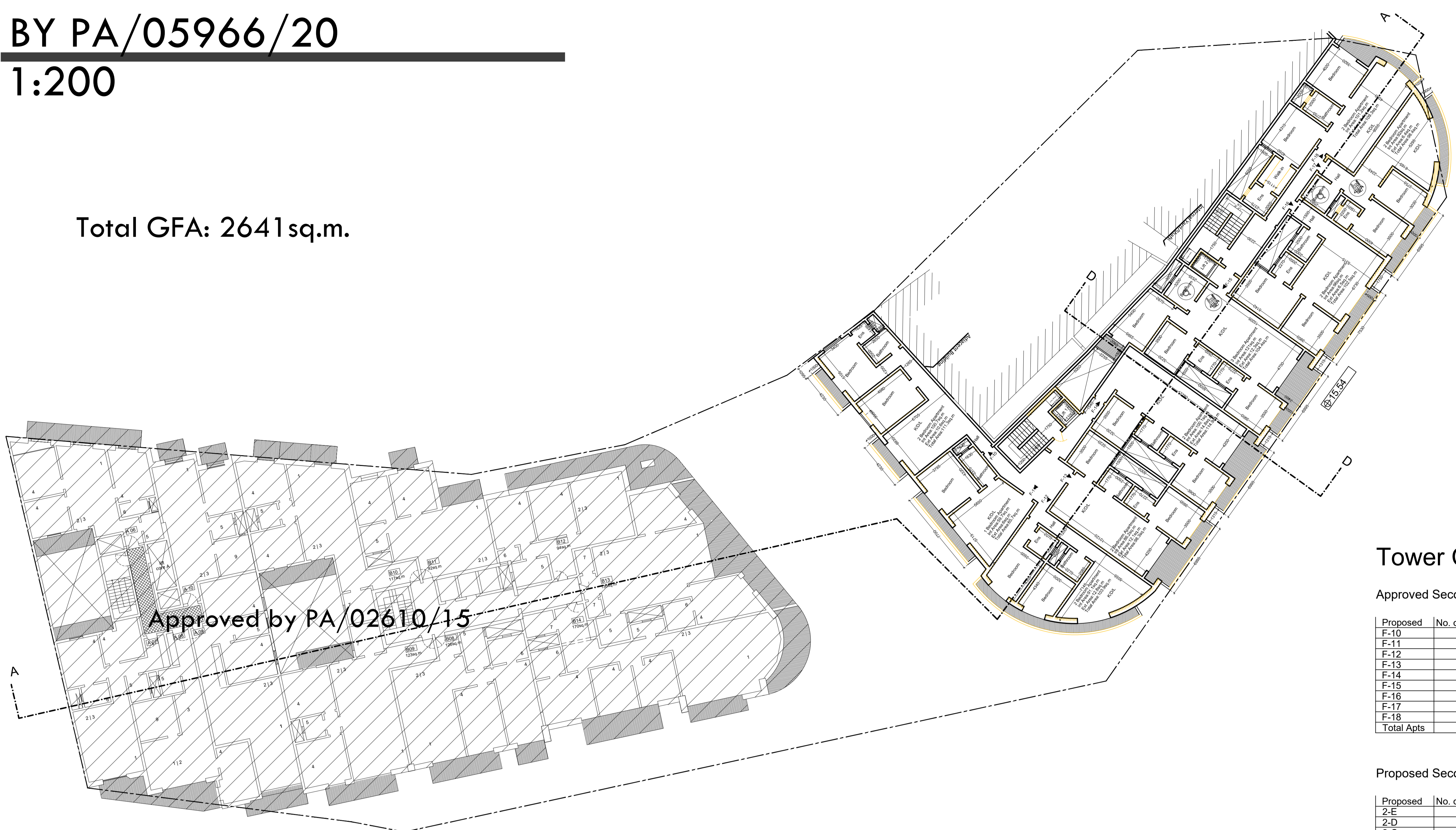


# APPROVED LEVEL 2 BY PA/05966/20 1:200

Total GFA: 2641sq.m.



Approved by PA/02610/15

## Tower C & D

### Approved Second Floor

Proposed	No. of bedroom
F-10	2
F-11	1
F-12	2
F-13	2
F-14	2
F-15	3
F-16	2
F-17	2
F-18	2
<b>Total Apts</b>	<b>9</b>

### Proposed Second Floor

Proposed	No. of bedroom
2-E	2
2-D	1
2-C	2
2-B	2
2-A	2
2-D	3
2-C	2
2-B	2
2-A	2
<b>Total Apts</b>	<b>9</b>

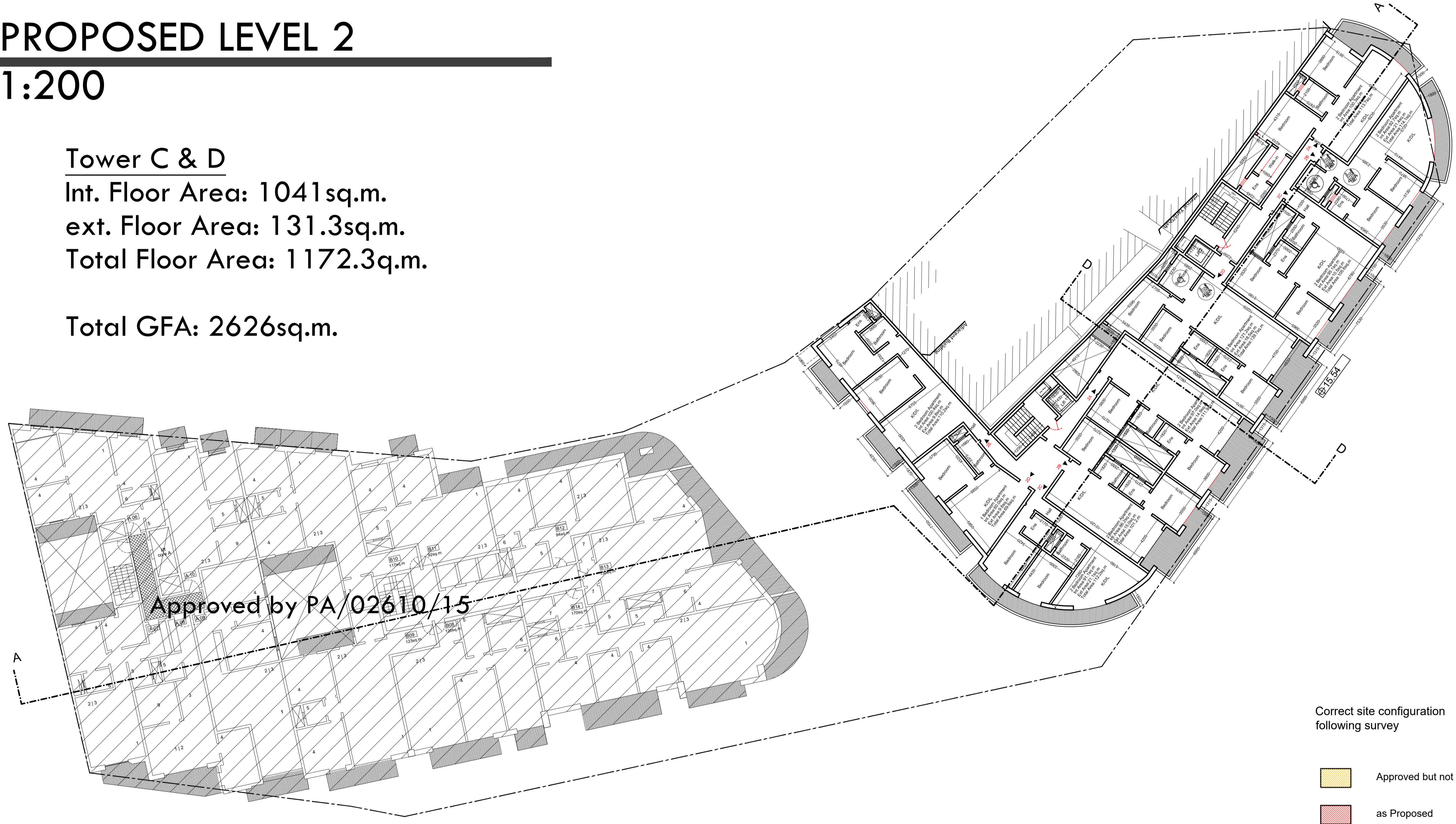
### Second Floor

	APPROVED	PROPOSED
total 3 bedroom apts.	1	1
total 2 bedroom apts.	7	7
total 1 bedroom apts.	1	1

# PROPOSED LEVEL 2 1:200

**Tower C & D**  
Int. Floor Area: 1041sq.m.  
ext. Floor Area: 131.3sq.m.  
Total Floor Area: 1172.3sq.m.

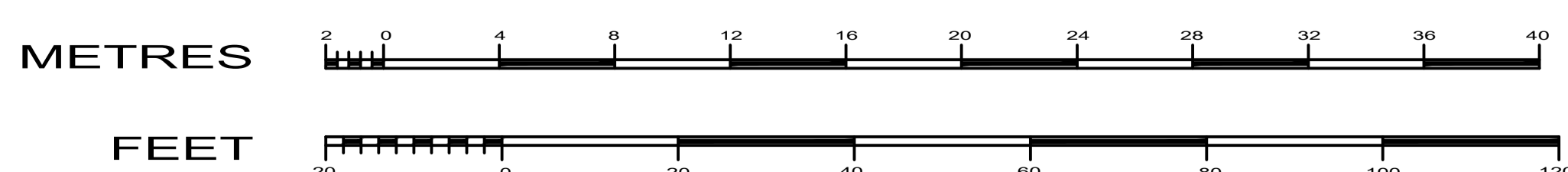
Total GFA: 2626sq.m.




Approved by PA/02610/15

Correct site configuration following survey

- Approved but not to built
- as Proposed



Rev.:	6	Date:	2016.09.29	Description:	Updated Drawings
 <b>DR EDWIN MINTOFF</b> B.E.A. (Hons.), Ph.D. (Newcastle), A.& C.E. 119 Silems Road, Gosport, Gosport, Hants. GU14 6JF Tel: 00356 21 237401 Fax: 00356 21 230766 e-Mail: info@edwinmintoff.com					
Client:	TRENDS CO. LTD. Tel: 21 237401				
Building:	RESIDENTIAL AND COMMERCIAL				
Dwg Title:	Approved and Proposed Level 2				
Scale:	1:200 on A0	Date:	December 2022		
Checked By:	P.A	Drawing No:	007		
Drawn By:	C.M.		20056		